



Small Animal Imaging

RE-IMAGINE THE WAY YOU WORK



Re-imagine the way you work

Imaging Solutions

Accurate Imaging

Accurate imaging in small animal practice requires stability, comfort and precision. From ultrasound examinations to radiography, proper positioning and reliable support tools are essential for consistent image quality and efficient workflows.

Podoblock small animal imaging solutions are designed to support veterinary professionals in daily clinical practice. By combining ergonomic design, stable positioning and durable materials, our tools help reduce physical strain while improving imaging consistency and patient handling.

Positioning

Accurate positioning is the foundation of reliable diagnostic imaging. Our positioning aids support stable patient placement while reducing movement during procedures.

These tools help minimise retakes, improve image consistency and support gentle, stress-reduced handling of small animal patients.

Protection Box

Flat panel detectors are valuable and sensitive components. The DR Small Animal Box protects your flat panel detector against impact and movement during positioning and exposure.

For practices without an integrated X-ray table with a Bucky drawer, this solution offers a practical alternative. It enables stable radiographic examinations while simultaneously protecting the flat panel from damage. Designed for everyday clinical use, it integrates easily into existing radiography setups.

Markers

Clear identification is essential for accurate diagnosis and documentation. Podoblock markers provide reliable and durable labelling during radiographic procedures.

Available in various models and configurations, they support consistent image identification to suit individual preferences and clinical workflows.

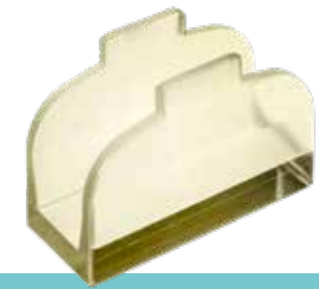
Re-imagine the way you work



Contents



Positioning aids P5



Ultrasound stand-off P4

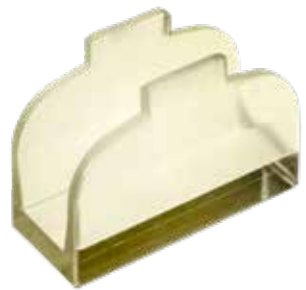


Flat Panel Solutions P10



Markers P11





SCAN FOR PRICES

U-scan

Our own standoff, adaptable for a wide range of linear-array transducers.

- Thickness sides: 7 mm
- Thickness bottom: 12 mm
- Comes in a protective box

Note:

We supply all available kinds of standoff on request.



SCAN FOR PRICES

Flabbus Ultrasound Standoff

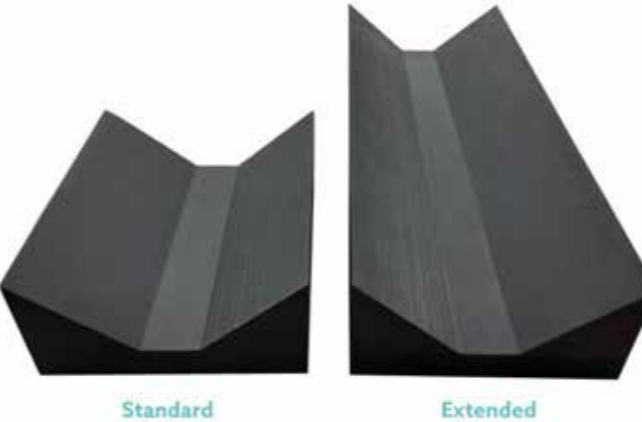
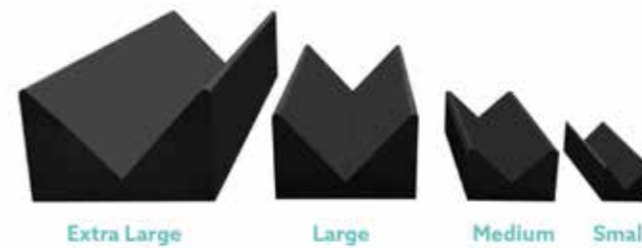
The Flabbus Ultrasound Standoff is an exceptionally elastic item, conforming to patient contours while maintaining uniform thickness and universal application to each type of probe head.

Flabbus Ultrasound Standoff is made of a proprietary synthetic gel, resulting in a moulded material that does not suffer inelastic strain from everyday stresses.

Consequently, the Flabbus Ultrasound Standoff does not have to be bagged or wrapped in plastic film to maintain its shape and can be easily stored. For optimal use, the user can cut it to the preferred size with the supplied scissors. For example, the 300 x 300 mm Flabbus can be cut into six smaller parts of 100 x 150 mm.

Any other size is a possibility, depending on personal choice.

- Size: 300 x 300 mm
- Thickness: 3 mm or 5 mm



SCAN FOR PRICES

Closed Cell Immobilizer Trough Bundle

These veterinary immobilizer V-shape troughs are made from high-density cross-link or "closed-cell" foam. They are lightweight, durable, highly radiolucent, and easy to clean. The cover-free design ensures optimal hygiene and artifact-free imaging.

Sizes

- S - L25 x W10 x H8 cm
- M - L28 x W18 x H12 cm
- L - L61 x W28 x H18 cm
- XL - L91 x W36 x H23 cm

Closed Cell Immobilizer Flat Bottom Trough Bundle

These veterinary flat bottom troughs are made from high-density cross-link "closed-cell" foam. They are lightweight, durable, highly radiolucent, and easy to clean. The cover-free design ensures optimal hygiene and artifact-free imaging.

Sizes

- Standard L38 x W36 x H17 cm
- Extended L91 x W36 x H17 cm

Closed Cell Large 45° Spinal Body Wedge Sponge

- 100% Radiolucent
- Artifact free imaging
- Cleanable, fluid resistant surface
- Lightweight and comfortable

Size

- L53.3 x W18 x H18 cm



Closed Cell Veterinary Surgery Sponge Bundle

Closed Cell Sponges are made from a lightweight, radiolucent, non-porous foam. The perfect solution for any positioning need. These positioning sponges are entirely fluid resistant, easy to clean and extremely durable. Featured in a non-coated, premium charcoal grey color.

- 100% Radiolucent
- Artifact free imaging
- Cleanable, fluid resistant surface
- Lightweight and comfortable
- Includes 6 different sponges



SCAN FOR PRICES



L38 x W36 x H17 cm L53 x W18 x H18 cm L38 x W36 x H17 cm



L25 x W28 x H5 cm
2 wedges included



L15 x W10 x H2,5 cm



L15 x W10 x H5 cm



Closed Cell Veterinary Sponge Bundle

These veterinary closed cell sponges offer premium imaging quality. These positioners are made from a lightweight, radiolucent, and non-porous foam. These charcoal grey positioning devices are entirely fluid resistant, easy to clean, and extremely durable. With no coating or cover, our closed cell sponges are highly radiolucent and offer completely artifact free imaging.

- High-density cross-link foam
- Lightweight, durable, and cleanable
- Liquid repellent surface, even if damaged
- Highly radiolucent and artifact-free
- Includes 6 different sponges



SCAN FOR PRICES



L38 x W36 x H17 cm L53 x W18 x H18 cm



L25 x W28 x H5 cm
2 wedges included



L15 x W10 x H2,5 cm



L15 x W10 x H5 cm



Flexible Vinyl Sandsocks

Flexible Vinyl Sandsocks are designed for nearly every positioning need, such as veterinary use, surgical aftercare, and general patient positioning.

- Reinforced double seams for extended durability
- Extremely flexible, tan coloured vinyl covering
- Designed to meet nearly any positioning need

Flexible Vinyl Sandsock 03

- Weight: 1,4 kg
- Size: 10 x 31 cm

Flexible Vinyl Sandsock 05

- Weight: 2,3 kg
- Size: 15 x 38 cm

Flexible Vinyl Sandsock 12

- Weight: 5,4 kg
- Size: 15 x 64 cm

Flexible Vinyl Sandsock 15

- Weight: 6,8 kg
- Size: 15 x 102 cm

Flexible Vinyl Sandsock Bundles

- 1 x Sandsock 03
- 1 x Sandsock 05
- 2 x Sandsock 12
- 1 x Sandsock 15
- 2 x Sandsock 03
- 2 x Sandsock 05
- 4 x Sandsock 12
- 2 x Sandsock 15



SCAN FOR PRICES



Heavy-Gauge Veterinary Vinyl Immobilizer Trough

These Troughs have a lightweight and highly durable, radiolucent design. The heavy-duty V-shape is perfect for immobilizing patients during imaging procedures.

- Heavy-gauge, reinforced black vinyl
- Straps to secure animal limbs
- Core foam and fabrics are radiolucent
- Seams will potentially show during imaging
- Available in sizes small to X-Large

Sizes

- S - L25,4 x W10,2 x H7,6 cm
- M - L38,1 x W28 x H13 cm
- L - L61 x W28 x H18 cm
- XL - L91,4 x W36 x H23 cm



SCAN FOR PRICES



DR-Small Animalbox

The DR-Small Animalbox is a radiolucent protection box. The special non-slip bottom ensures a secure position on the X-ray table. The surface is large enough to position small animals on top. There is room available inside the box for wires.

- Available for all current DR Flat Panels
- Perfect fitting box and secured with locking door
- The Polycarbonate box comes with two handles for easy positioning.



FIND BRAND



DR-Pouch

A radiolucent pouch that protects your fragile and expensive X-ray panel from outside influences during handling!

Our DR-Pouch is available from stock in all ISO measurements and other sizes & models are available on request.

It comes with:

- Synthetic leather on the outside with marked detection area
- One long side and one short side are made of transparent material to get access to switches and view LED's
- Thermo-plastic strap handle covered with rubber grip for comfort carrying
- Fast and convenient zipper closure on one long side for ease access



FIND BRAND

Transparent Sides

Grab-and-Go



X-Ray Clip

Stainless steel clip for analogue and CR-cassettes.

- 55 x 21 mm
- Gap: 18 mm

Available markers:

- L / R
- LF / RF
- LV / RV
- LH / RH
- LAT / MED



X-Ray Clip DR

Multiclip that clenches around the edges of our boxes / pouches.

- 95 x 25 mm
- Gap: 27 mm

Available markers:

- L / R
- LF / RF
- LV / RV
- LH / RH
- LAT / MED



Multimarker

Stainless steel all-in-one marker with suction cup.

- Ø 50 mm

Available markers:

- LF / RF / LH / RH
- LV / RV / LH / RH
- LAT / MED / DV / VD



SCAN FOR PRICES

Multiclip DR

Multiclip that clamps around the edges of our boxes or pouches.

- Ø 50 mm
- Gap 27 mm

Available markers:

- LF / RF / LH / RH
- LV / RV / LH / RH
- LAT / MED / DV / VD



Sarah Marker

Marker with integrated label to always be sure about the horizontal plane.

Available markers:

- L / R with suction cup
- L / R with stainless steel clip



Buckymarker

Marker with suction cup or clip for your cassette holder to provide information about the horizontal plane.

- 360° rotation
- Size: L 48 x W 44 x H 4 mm

Available markers:

- with suction cup
- with stainless steel clip



Podoblock:

- Makes work easier
- Excellent service
- Safe and ergonomic working
- Global delivery
- Excellent quality products
- Customization
- Easy-to-transport products



Re-imagine the way you work

+31 50 82 00 257
info@podoblock.com
podoblock.com



Contact